



Retail Technologies, Inc.

RTI N-Aisle Printing Solutions

## RTI MINICART

Mobile Powered Workstations



Reduce Waste • Increase Productivity • Cut Labor

<https://retail-tech.com/rti-minicart/>

## RTI MiniCart

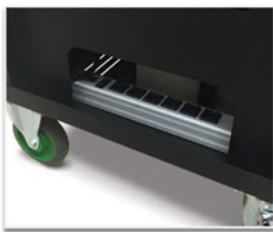
The entry-level RTI MiniCart mobile powered workstation is designed to provide true mobility.

This lightweight, compact unit is ideal for powering a laptop, barcode printer and scanner for 8+ hours at time. At the end of use, simply plug your cart into a standard wall outlet to recharge.

### Benefits Include:

- Reduce labor by as much as \$10K per worker
- Increase receipts by as much as 60%
- Reduce improperly labeled products
- Reduce inaccurate inventories
- Process goods directly at the pallet or on the dock
- See your ROI in less than three months

A number of optional accessories are available and can be easily integrated in seconds for a highly versatile workstation.



Easy-access power strip



Integrated push handles for easy maneuverability



Optional slide-out keyboard tray, printer tray and scanner holder



The RTI MiniCart come standard with (one) top shelf, 5" locking casters, push handles, integrated power system and power strip.

### Technical Specifications:

<b>Height Adjustable:</b>	Middle shelf adjustable from 20-32" (508-813 mm)
<b>Shelf:</b>	(1 standard top shelf) 21.75" wide x 20" deep metal (552 x 508 mm)(optional middle shelf) 20" wide x 20" deep metal (508 x 508 mm)
<b>Capacity:</b>	60 lbs (27 kg) per shelf evenly distributed
<b>Casters:</b>	5 x 2" (127 x 51 mm) rubber wheels, front fixed, rear locking swivel
<b>Color &amp; Construction:</b>	Black powder coat & steel
<b>Battery Type:</b>	Sealed lead acid
<b>Typical Devices Powered for 8 Hour Shift:</b>	Laptop/thin client, LCD, small or mid-range thermal printer & scanner
<b>Continuous Output Power (W):</b>	450
<b>Surge Power:</b>	900
<b>Battery Bank (Wh):</b>	1200
<b>Charge Time (Hrs):</b>	9
<b>Operating Temp (F):</b>	32-95°
<b>Weight:</b>	140 lbs. (64 kg)
<b>Dimensions:</b>	20" long x 21.75" wide x 43" high (508 x 552 x 1092 mm)

1109 I-65 Commerce Dr. • Mobile, AL • 36606 • USA • 1.800.277.4277 • Retail-Tech.com